

# Removal

For removal of Leukocyte



# LeukoCatch® II

A Device to Collect Leukocyte

**LeukoCatch®**

SYRINGE TYPE



# Collection

# You can remove leukocyte only by filtering!

Leuko filter traps leukocytes specifically.  
The filter removes leukocytes from a whole blood.

Easy-to-Use  
Column Type

Just Fit to  
50ml  
Centrifuge Tubes

!!There are some centrifuge tubes that does not fit.

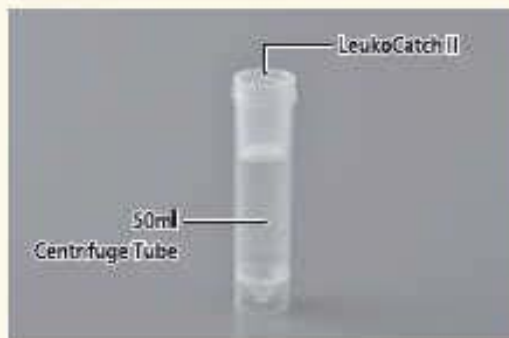


Leukofilter

Cat. No.	Item	Packaging
1883-110LC	LeukoCatch II Column Type	5pcs.

## PROTOCOL

1. Fit Leuko Catch II on a 50ml Centrifuge Tube.



2. Pipette a blood sample.



3. Filter the sample.



4. Leuko Filter traps leukocytes and leukocytes are removed from the filtrate.



# The leukocyte count after filtration by LeukoCatch II

6 examples from 20 sights randomly obtained from observation of a mouse blood.

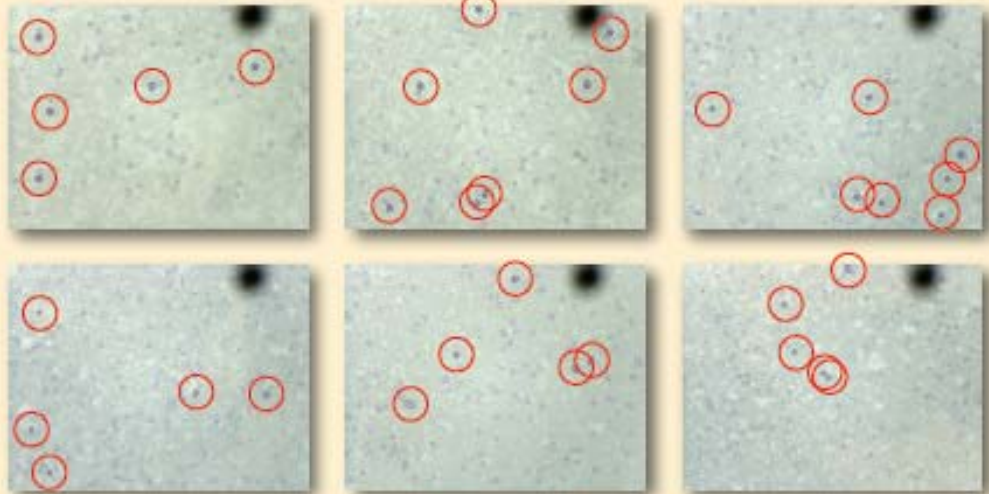
\* Data provider : Mie University, Faculty of Medicine, The Laboratory of Medical Zoology

before



■ Leukocyte before filtration

80 cells (in the whole 20 sights)



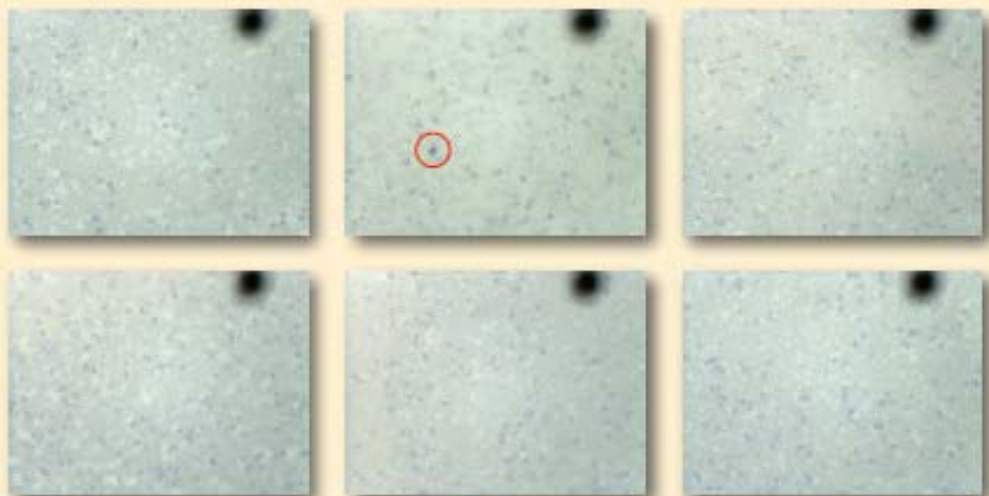
filtration

after



■ Leukocytes after filtration with LeukoCatch II

5 cells (in the whole 20 sights)



## LeukoCatch II Q&A

**Q.** Is it possible to use a whole blood as it is without dilution?

**A.** It is possible but filtration time is much longer. Also it causes clog on the porous filter much quicker, thus operation efficiency may drop. It is suggested that a whole blood be diluted 2-3 fold with PBS.

**Q.** Is it possible to collect leukocytes with LeukoCatch II?

**A.** A protocol for that purpose has not been established at this moment and it is under development. For that purpose, we suggest Leuko Catch syringe type (collection rate 30-60%).

**Q.** Is it possible to use an animal blood?

**A.** A blood from different animals may cause difference in the results. Please try with a sample product first. Our in-house evaluation is conducted with human and mouse bloods.

**Q.** Is there any tendency in the efficiency of leukocyte removal due to the types or sizes of a leukocyte?

**A.** Basically, the types or sizes do not affect the efficiency and uniform results can be obtained. There is not a case where, for example, only lymphocytes are left unremoved.

